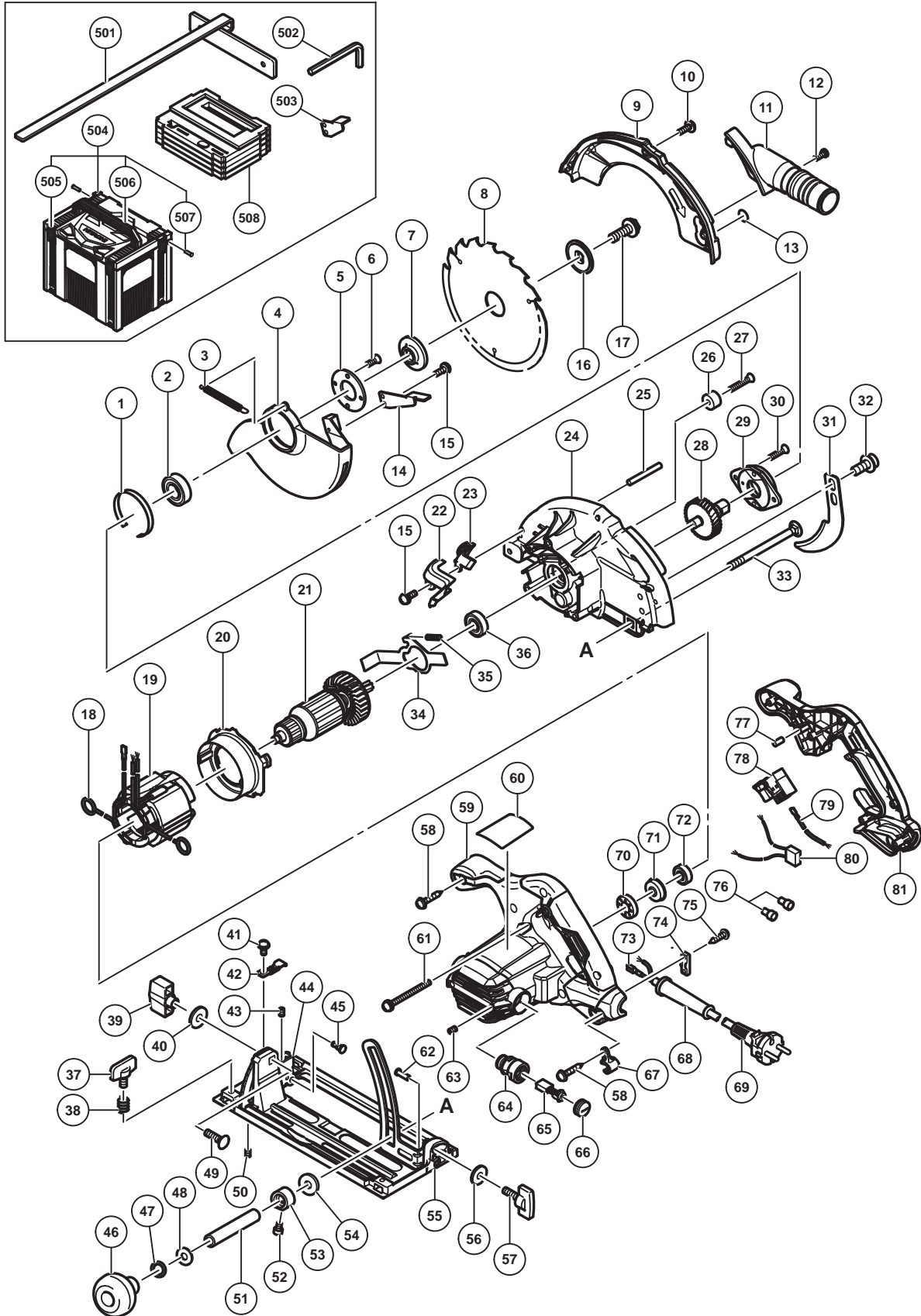


ELECTRIC TOOL PARTS LIST

CIRCULAR SAW Model C 6BU3

2016-7-20
(E1)



PARTS

C 6BU3

ITEM NO.	CODE NO.	DESCRIPTION	NO. USED	REMARKS
1	998887	LINER	1	
2	327694	BALL BEARING 6003VVCM (NYLON RETAINER)	1	
3	370374	RETURN SPRING	1	
4	370357	LOWER GUARD	1	
5	302435	BEARING COVER	1	
6	990430	SEAL LOCK FLAT HD. SCREW M4 X 10	2	
7	370272	WASHER (A)	1	
8	324678	TCT SAW BLADE 165MM-D30 HOLE-NT16	1	
9	370355	SAW COVER	1	
10	951039	MACHINE SCREW (W/SP. WASHER) M4 X 12	3	
11	997247	DUST COLLECTOR	1	
12	935196	MACHINE SCREW (W/WASHERS) M4 X 12 (BLACK)	1	
13		NAME PLATE (BRAKE)	1	
14	370542	LEVER	1	
15	935196	MACHINE SCREW (W/WASHERS) M4 X 12 (BLACK)	2	
16	370279	WASHER (B)	1	
17	324662	HEX. SOCKET HD. BOLT M8 X 15.5	1	
18	930703	BRUSH TERMINAL	2	
19	340946E	STATOR ASS'Y 220V-230V	1	INCLUD.18
20	370342	FAN GUIDE	1	
21	361037E	ARMATURE 220V-230V	1	
22	370346	FLOW GUIDE (B)	1	
23	370345	FLOW GUIDE (A)	1	
24	370351	GEAR COVER	1	
25	949686	ROLL PIN D6 X 40 (10 PCS.)	1	
26	961729	CUSHION	1	
27	949794	FLAT HD. SCREW M6 X 20 (10 PCS.)	1	
28	370372	SPINDLE AND GEAR SET	1	
29	302433	BEARING HOLDER	1	
30	992013	SEAL LOCK FLAT HD. SCREW M5 X 14	2	
31	370366	RIVING KNIFE	1	
32	370287	HEX. SOCKET HD. BOLT M8	2	
33	370663	DIAGONAL BOLT M8	1	
34	370363	LOCK LEVER	1	
35	330982	SPRING (A)	1	
36	6001VV	BALL BEARING 6001VV	1	
37	301806	WING BOLT M6 X 15	1	
38	947859	LOCK SPRING	1	
39	324658	WING NUT M8	1	
40	949433	BOLT WASHER M8 (10 PCS.)	1	
41	331003	MACHINE SCREW (W/SP. WASHER) M4 (BLACK)	1	
42	324659	GUIDE PIECE	1	
43	319541	SEAL LOCK HEX. SOCKET SET SCREW M5 X 6	1	
44	370367	BEVEL PLATE	1	
45	320163	STEP PIN D6 X 13	1	
46	324660	KNOB	1	
47	676531	O-RING (P-7)	1	
48	949433	BOLT WASHER M8 (10 PCS.)	1	
49	302457	BOLT (SQUARE) M8 X 30	1	
50	302469	SLOTTED HD. SET SCREW (SEAL LOCK) M6 X 6	1	

PARTS

C 6BU3

ITEM NO.	CODE NO.	DESCRIPTION	NO. USED	REMARKS
51	370267	SLEEVE (A)	1	
52	370278	SEAL LOCK HEX. SOCKET HD. BOLT M4 X 6	1	
53	370268	SLEEVE (B)	1	
54	370376	WASHER	1	
55	370360	BASE ASS'Y	1	INCLUD.62
56	949425	WASHER M6 (10 PCS.)	1	
57	302459	WING BOLT M6 X 17	1	
58	301653	TAPPING SCREW (W/FLANGE) D4 X 20 (BLACK)	6	
59	370820	HOUSING ASS'Y	1	INCLUD.63,64
60		NAME PLATE	1	
61	997841	MACHINE SCREW (W/WASHERS) M5 X 50 (BLACK)	3	
62	308480	RIVET D6 X 17	1	
63	938477	HEX. SOCKET SET SCREW M5 X 8	2	
64	960685	BRUSH HOLDER	2	
65	999056	CARBON BRUSH (1 PAIR)	2	
66	945161	BRUSH CAP	2	
67	370269	CORD HOLDER	1	
68	953327	CORD ARMOR D8.8	1	
* 69	500390Z	CORD	1	(CORD ARMOR D8.8)
* 69	500235Z	CORD	1	(CORD ARMOR D8.8) FOR RUS
70	331006	RUBBER BUSHING	1	
71	322089	BEARING BUSHING	1	
72	333945	BALL BEARING 608VV	1	
73	331707	FASTON	1	
74	937631	CORD CLIP	1	
75	984750	TAPPING SCREW (W/FLANGE) D4 X 16	2	
76	959141	CONNECTOR 50092 (10 PCS.)	2	
77	931701	BEARING LOCK	1	
78	334474	SWITCH	1	
79	370661	INTERNAL WIRE	1	
80	930039	NOISE SUPPRESSOR	1	
81	370341	HANDLE COVER	1	

STANDARD ACCESSORIES

C 6BU3

ITEM NO.	CODE NO.	DESCRIPTION	NO. USED	REMARKS
501	370587	GUIDE	1	
502	872422	HEX. BAR WRENCH 6MM	1	
503	370264	LEVER	1	
* 504	337528	CASE ASS'Y (STACKABLE 4)	1	INCLUD.505-507 FOR EUROPE
* 505	336472	LATCH	4	FOR EUROPE
* 506	336473	HANDLE	1	FOR EUROPE
* 507	336474	HINGE	2	FOR EUROPE
* 508	370590	BOTTOM CUSHION	1	FOR EUROPE

OPTIONAL ACCESSORIES

ITEM NO.	CODE NO.	DESCRIPTION	NO. USED	REMARKS
601	330998	GUIDE RAIL ASS'Y	1	INCLUD.602-607
602	330968	GUIDE RAIL ADAPTER	1	
603	330978	GUIDE RAIL PLATE	1	
604	330979	GUIDE BAR	1	
605	330980	GUIDE BAR	1	
606	307947	WING BOLT M6 X 12	2	
607	331761	MACHINE SCREW (W/SP. WASHER) M5 X 12 (BLACK)	2	